

UNIFORM LOOK BOOK





HOTEL/LODGING

Parking/Valet, Front Desk, Management

GOOD

BETTER

BEST

Parking/Valet

- Ultimate Lightweight Polos #1522/5522/5524; Utility Chino Short #2437/8435
- Mini-Pique Polos #1507/5507/1527/5570; Utility Chino Pant #2537/8537
- Easy Care Poplin #1230/5230; Melange Chambray Shirt #1039/5041; Microfiber Short #2432/8432; Coach's Jacket #3430
- Hi-Performance Polo #1576/5576; Sorrento Tech Shirt #4283; Performance Stretch Pant #2558/8558
- Stretch Broadcloth #1033/5034/5045; Bengal Stripe Shirt #1038; Flex Chino Pant & Short #2583/8583/2483/8483; Lightweight Soft-Shell Jacket #3428/6428
- Point Grey Shirt #1972/5272; Point Grey Pant #2572/8577; Herringbone Jacket #3465/6465

Front Desk

- Lightweight Poplin #1295/5040; Performance Stretch Pant #2558/8558; Performance Tek Jacket #3440/6440
- Stretch Broadcloth #1033/5033; Microfiber Pant #2534/8532
- Executive Pinpoint Oxford #1978/5980; Dolman Blouse #5229; Russel Dress Pant #2530/8530
- Batiste Shirt #1292/5293; Jersey Knit Cardigan #4350; Russel Dress Pant #2530/8530
- Sustainable Shirt #1996/5296; Soft Blouses #5428/5426/5097; Synergy Dress Pant & Skirt #2525/8525/9725; Synergy Suit Coat #3525/6575
- Point Grey Shirt #1972/5272; Point Grey Blazer #3572/6572; Point Grey Pant #2572/8577

Management

- Essential Broadcloth #1354/5354/5355; Microfiber Pant & Skirt #2534/8532/9732; Triblend Sweater #7056/7064
- Lightweight Poplin #1295/5040; Two-Pocket Blouse #5056; Performance Stretch Pant #2558/8558
- Lightweight Poplins #1295/5295/5040; Russel Suit Coat #3530/6535; Russel Pant #2530/8530
- Sustainable Shirt #1996/5296; Synergy Dress Pant #2525/8526; Synergy Dress #9925
- Executive Pinpoint Oxford #1978/5980; Soft Shell Blouse #5426; Synergy Blazer #3525/6575; Synergy Dress Pant & Skirt #2525/8525/9725; Acrylic Cardigan #7053
- Point Grey Shirt #1972/5272; Point Grey Blazer #3572/6572; Point Grey Pant #2572/8577

HOTEL/LODGING

Maintenance, Housekeeping, Pool/Spa

GOOD

BETTER

BEST

Maintenance

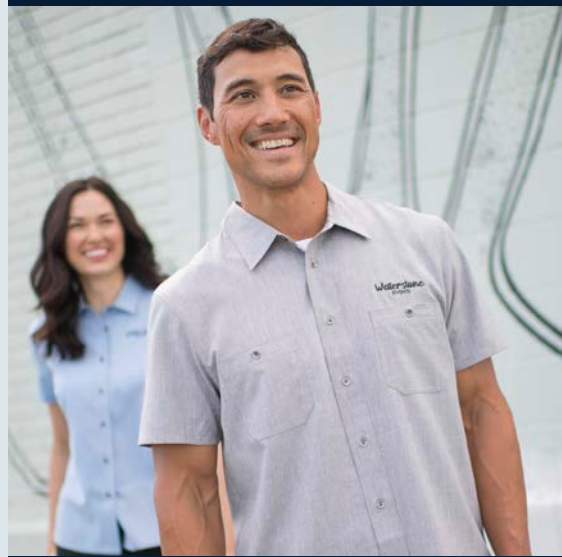
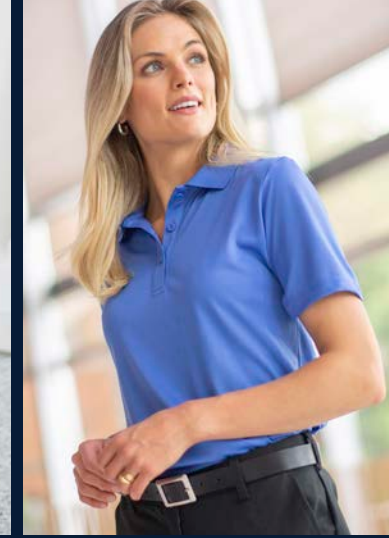
- Mini-Pique Polo #1507/5507; Melange Chambray Shirt #1039/5041; Utility Chino Cargo Short #2438/8438
- Pinpoint Oxford #1925; Rugged Comfort Pant #2551/8551
- Hi-Performance Mesh Polo #1576/5576; EZ Fit Utility Chino Pant #2540/8540; Rain Jacket #3435
- Essential Broadcloth Shirt #1314/5356; Flex Chino Pant & Short #2583/8583/2483/8483
- Easy Care Poplin #1230/5230; Utility Chino Pant #2537/8537
- Stretch Broadcloths #1033/5034/5045; Performance Stretch Pant #2558/8558; 3-Season Jacket #3410

Housekeeping

- Mini-Pique Polo #1507/5507; Utility Chino Pant #2537/8537
- Essential Housekeeping Shirt & Tunic #4284/7284; Essential Pant #8898
- Pincord Service Shirt & Tunic #4282/7277; Essential Pant #2793/8793
- Melange Chambray Service Shirt & Tunic #4281/1039/7279; Sorrento Service Shirt & Pullover Tunic #4283/7261; Sorrento Pant #8861; Flex Chino Pant #2583/8583
- Bengal Stripe #1038/7240; Sorrento Pant #8861; Flex Chino Pant #2583/8583
- Premier Shirt & Tunic #4890/7890; Essential Pant #2793/8793

Pool / Spa

- Ultimate Lightweight Polos #1522/5522/5524; Microfiber Pant #2534/8532
- Two-color Hibiscus Batiste Shirt #1036; Microfiber Short #2432/8432
- Batiste Service Shirt #1031; Utility Chino Pant #2537/8537
- Melange Chambray Shirt #1039/5041; Flex Chino Short #2483/8483
- Sorrento Tech Shirt & Pullover Tunic #4283/7261; Flex Chino Pant #2583/8583
- Bengal Camp Shirt #1038; Utility Chino Short #2437/8435





CASINO/GAMING

Valet, Security, Floor Supervisor

GOOD

BETTER

BEST

Valet

- Ultimate Lightweight Polos #1522/5522/5524; Flex Chino Pant & Short #2583/8583/2483/8483; Performance Tek Jacket #3440/6440
- Essential Broadcloth #1354/5355; Microfiber Pant #2534/8532
- Batiste Dress Shirt #1291/5291/1031; Ottoman Trim Vest #4398/7398; Essential Pant #2793/8793
- Comfort Stretch Poplin #1246/5246; Performance Stretch Pant #2558/8558; Lightweight Soft-Shell Jacket #3428/6428
- Executive Pinpoint Oxford #1976/5980; Lightweight Soft Shell Jacket #3428/6428; Synergy Dress Pant #2535/8535
- Point Grey Shirt #1972/5272; Point Grey Blazer #3572/6572; Point Grey Pant #2572/8577

Security

- Tactical Snag-Proof Polo #1517/1567; Rugged Comfort Pant #2551/8551
- Navigator Shirt #1212/5212; Utility Chino Cargo Pant #2538/8538
- Lightweight Poplin #1295/5295; Contemporary Blazer #3505/6505; Microfiber Pant #2534/8532
- Security Shirt #1225; Security Pant #2595/8591; Coach's Jacket #3430
- Sustainable Dress Shirt #1996/5296; Signature Suit Coat #3633/6633; Signature EZ Fit Dress Pant #2531/8531
- Security Shirt #1275; Clip-on Tie #CLOO; Security EZ Fit Pant #2596/8596; Security Bomber Jacket #3462

Floor Supervisor

- Lightweight Poplin #1295/5040; Dolman Blouse #5229; Performance Stretch Pant #2558/8558; Ponte Knit Pant & Dress #8571/9935
- Easy Care Oxford #1077/5077; Performance Stretch Pant #2558/8558
- Pinpoint Oxford #1976; Soft Wrap Blouse #5428; Microfiber Pant & Skirt #2534/8532/9732
- Comfort Stretch Poplin #1246/5246; Russel Dress Pant #2530/8530; Acrylic Full-Zip Sweater #4066
- Point Grey Shirt #1972/5272; Contemporary Blazer #3505/6505; Synergy Pant & Skirt #2535/8535/9725
- Point Grey Shirt #1972/5272; Point Grey Blazer #3572/6572; Point Grey Pant #2572/8577



CASINO/GAMING

Bartenders/Servers, Dealers, Floor Staff

GOOD

BETTER

BEST

Bartenders/Servers

- Ultimate Polos #1512/5512/1562; Flex Chino Pant & Short #2583/8583/2483/8483; Ponte Knit Pant #8571
- Essential Broadcloth #1354/5354; Performance Stretch Pant #2558/8558; 3-Pocket Twill Apron #9003
- Hospitality Broadcloth #1290/5290; Polyester Vest #4490/7490; Microfiber Pant & Skirt #2534/8532/9732
- Stand-Up Collar Batiste Shirt #1398/5398; Essential Pant #2793/8793; Twill Waist Apron #9041
- Batiste Café Shirt #1291/5291; Ottoman Trim Vest #4398/7398; Essential Pant #2793/8793; Ponte Sheath Dress #9935
- Batiste Dress Shirt #1292/5292; Synergy Pant #2525/8525; Denim Waist Apron #9098

Dealers

- Hospitality Broadcloth #1396/5396; Polyester Vest #4490/7490/7270; Polyester Pant #2290/8550
- Ultimate Polos #1512/5512/1562; Performance Stretch Pant #2558/8558
- Hospitality Broadcloth #1290/5290; Brocade Vest #4390/7390; Flex Chino Pant #2583/8583; Ponte Knit Pant #8571
- Batiste Stand-Up Collar Shirt #1398/5398; Essential Pant #2796/8794; Dealer Apron #9021
- Batiste Stand-Up Collar Shirt #1398/5398; Ottoman Trim Vest #4398/7398; Essential Pant #2796/8794; Dealer Apron #9021
- Batiste Café Shirt #1291/5291; Dress Lapel Vest #4496/7496; Essential Pant #2793/8793

Floor Staff/Slot Attendants

- Hospitality Broadcloth #1396/5396; Brocade Vest #4390/7390; Polyester Pant #2290/8550
- Optical Heather Polo #1590/5590; Performance Stretch Pant #2558/8558
- Batiste Stand-Up Collar Shirt #1398/5398; Signature Vest #4633/7633; Signature EZ Fit Dress Pant #2531/8531
- Batiste Shirt #1292/5293; Essential Pant #2796/8794; Denim Waist Apron #9098
- Executive Pinpoint Oxford #1978/5980; Russel Suit Coat #3530/6535; Russel Dress Pant #2530/8530; Ponte Sheath Dress #9935
- Batiste Café Shirt #1291/5291; Dress Lapel Vest #4496/7496; Essential Pant #2793/8793





RESTAURANT

Server/Host, Kitchen Staff, Busser

GOOD

BETTER

BEST

Server/Host

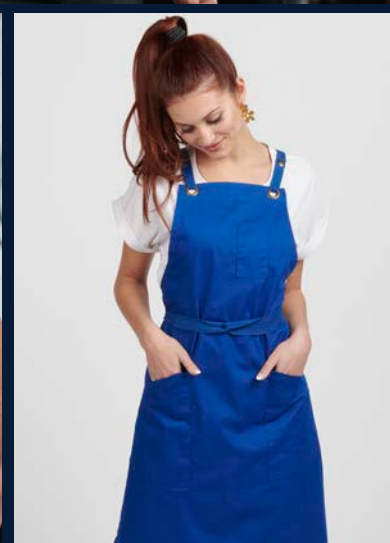
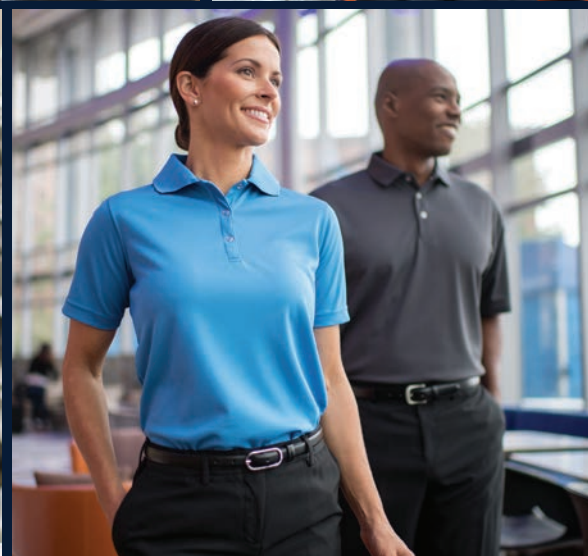
- Ultimate Polo #1512/5512; Essential Pant #2793/8793; 3-Pocket Waist Apron #9003
- Hospitality Broadcloth #1290/5290; Essential Vest #4490/7490; Microfiber Pant #2534/8532
- Batiste Hospitality Shirt #1392/5392; Flex Chino Pant #2583/8583; Twill Waist Apron #9041
- Executive Pinpoint Oxford #1976/5980; Soft Pleated Blouse #5097; Flex Chino Pant #2583/8583; Ponte Knit Pant #8571
- Batiste Café Shirt #1291/5291; Ottoman Trim Vest #4398/7398; Performance Stretch Pant #2558/8558
- Point Grey Shirt #1972/5272; Point Grey Blazer #3572/6572; Point Grey Pant #2572/8577; Ponte Sheath Dress #9935

Kitchen Staff

- Food Service Polo #1586; Cook Shirt #1302; Traditional Chef Pant #2001; Ball Cap #HT03
- Cook Shirt #1303; Basic Chef Pant #2000; 3-Pocket Bib Apron #9002
- Cook Shirt with Mesh Back #1305; Ultimate Chef Pant #2002
- Classic Chef Coat #3300; Ultimate Chef Pant #2002; Skull Cap #HT01
- Chef Coat with Mesh Back #3333; Cargo Chef Pant #2003; Twill Bib Apron #9043
- Classic Chef Coat #3302; Cargo Chef Pant #2003; Beanie with Self-fastening Back #HT04

Busser

- Ultimate Lightweight Polo #1522/5522; Rugged Comfort Pant #2551/8551
- Food Service Polo 1586; Utility Chino Pant #2540/8540; 3-Pocket Bib Apron #9002
- Essential Broadcloth #1354/5354; Flex Chino Short #2483/8483
- Lightweight Poplin #1295/5295; Performance Stretch Pant #2558/8558
- Melange Camp Shirt #1039/5041; Flex Chino Pant #2583/8583; Ponte Knit Pant #8571
- Batiste Cafe Shirt #1291/5291; Essential Pant #2793/8793; Twill Waist Apron #9041



FOOD SERVICE

Fast Food, Baking/Culinary, Catering

GOOD

BETTER

BEST

Fast Food

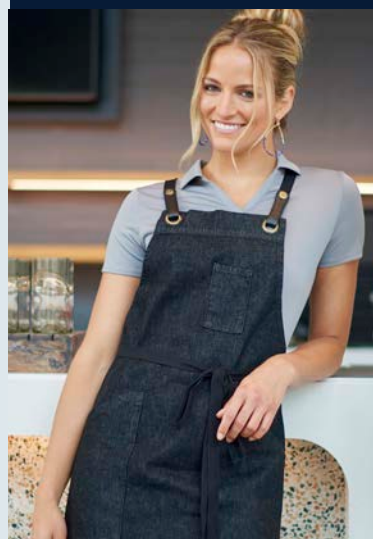
- Food Service Polo #1586; Utility Chino Pant #2537/8537
- Mini-Pique Polo #1507/5507/5570; Essential Pant #2793/8793;
- Essential Broadcloth Shirt #1354/5354; Flex Chino Short #2483/8483; Twill Bib Apron #9043
- Melange Camp Shirt #1039/5041; Flex Chino Pant #2583/8583; Ponte Knit Pant #8571
- Batiste Café Shirt #1291/5291; Flex Chino Pant #2583/8583; Denim Bib Apron #9097
- Hospitality Broadcloth Shirt #1290/5290; Performance Stretch Pant #2558/8558; Ball Cap #HT03; Performance Tek Jacket #3440/6440

Baking/Culinary

- Food Service Polo #1586; Flex Chino Pant #2583; Ponte Knit Pant #8571
- Essential Broadcloth #1354/5355; Traditional Chef Pant #2001; Bistro Apron #9012
- Cook Shirt with Mesh Back #1305; Traditional Chef Pant #2001; Twill Bib/Waist Apron #9043/9041
- Bistro Shirt #1350; Basic Chef Pant #2000; Poplin Chef Hat #HT00
- Classic Chef Coat #3300; Cargo Chef Pant #2003; Beanie with Elastic Back #HT02
- Chef Coat with Mesh Back #3363; Cargo Chef Pant #2003; Denim Bib/Waist Apron #9097/9098

Catering

- Food Service Polo #1586; Flex Chino Pant #2583/8583; Ponte Pant #8571
- Essential Broadcloth #1354/5355; Performance Stretch Pant #2558/8558; Half Bistro Apron #9007
- Hospitality Broadcloth #1290/5290; Microfiber Pant #2534/8532; Essential Vest #4490/7490
- Banded Collar Batiste Shirt #1392/5392; Essential Pant #2796/8794; Twill Bib/Waist Apron #9043/9041
- Stand-up Collar Batiste Shirt #1398/5398; Russel Dress Pant #2530/8530; Denim Bib Apron #9097
- Batiste Shirt #1292/5292; Ottoman Trim Vest #4398/7398; Essential Pant #2793/8793





HEALTHCARE

Assisted Living/Caregiver, Hospital/Medical Office, Janitorial

GOOD

BETTER

BEST

Assisted Living/Caregiver

- Mini-Pique Polo #1507/5507/5570; Flex Chino Short #2483/8483; Performance Tek Jacket #3440/6440
- Optical Heather Polo #1590/5590; Utility Chino Pant #2537/8537
- Melange Camp Shirt #1039/5041; Microfiber Pant #2534/8532; Soft Shell Jacket #3428/6428
- Pincord Service Shirt & Tunic #4282/7277; Flex Chino Pant #2583/8583
- Sorrento Service Shirt & Pullover Tunic #4283/7283/7260; Sorrento Pant #8861; Essential Pant #2793/8793
- Melange Service Shirt & Tunic #4281/7279; Essential Pant #2793/8793; Pull-on Pant #8891; Herringbone Jacket #3465/6465

Hospital/Medical Office

- Lightweight Poplin #1295/5040; Essential Pant #2793/8793
- Ultimate Lightweight Polo #1522/5522; Polyester Pant #2290/8550
- Bengal Tunic & Camp Shirt #1038/7240; Dolman Blouse #5229; Flex Chino Pant #2583/8583; Shirttail Open Cardigan #7056
- Easy Care Oxford #1077/5077; Microfiber Pant #2534/8532; Performance Tek Jacket #3440/6440
- Executive Pinpoint Oxford #1978/5980; Soft Pleated Blouse #5097; Synergy Pant & Skirt #2535/8535/9725; Acrylic Blend Sweater 7053/4066
- Point Grey Shirt #1972/5272; Point Grey Blazer #3572/6572; Point Grey Pant #2572/8577

Janitorial

- Mini-Pique Polo #1507/5507; Utility Chino Cargo Pant #2538/8538; Coach's Jacket #3430
- Essential Service Shirt & Smock #4891/7887/7889; Rugged Comfort Pant #2551/8551
- Essential Broadcloth #1314/5356; Utility Chino Pant #2537/8537
- Essential Service Shirt & Scoop Neck Tunic #4284/7284; Flex Chino Pant #2583/8583; Pull-on Pant #8898
- Sorrento Tech Shirt & Tunic #4283/7260; Essential Pant #2793/8793; Sorrento Pant #8861
- Melange Camp Shirt #1039/5041; Essential Pant #2793/8793; Acrylic Full-Zip Sweater #4066



CAR DEALERSHIP

Salesman, Customer Service/Reception, Car Service Staff

GOOD

BETTER

BEST

Salesman

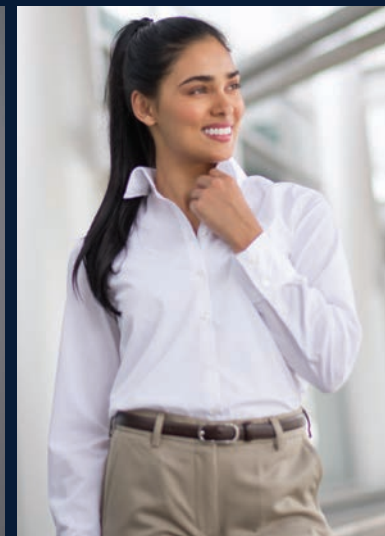
- Ultimate Lightweight Polo #1522/5522/5524; Flex Chino Short #2483/8483
- Optical Heather Polo #1590/5590; Flex Chino Pant #2583/8583; Ponte Knit Pant #8571
- Easy Care Oxford #1077/5077; Performance Stretch Pant #2558/8558; Herringbone Jacket #3465/6465
- Executive Pinpoint Oxford #1976/5980; Soft Shell Blouse #5426; Microfiber Pant #2534/8532; Performance Pullover #3442
- Sustainable Shirt #1996/5296; V-Neck Blouse #5274; Russel Dress Pant #2530/8530; Acrylic Sweater #4066
- Point Grey Shirt #1972/5272; Point Grey Blazer #3572/6572; Point Grey Pant #2572/8577

Customer Service/Reception

- Soft Touch Polo #1500/5500; Flex Chino Pant #2583/8583; Microfleece Jacket #3450/6450/3456
- Ultimate Lightweight Polo #1522/5522/5524; Flex Chino Pant #2583/8583; Ponte Knit Pant #8571
- Lightweight Poplin #1245/5245; Essential Pant #2793/8793;
- Stretch Broadcloth #1033/5033; Soft Pleated Blouse #5097; Performance Stretch Pant #2558/8558
- Executive Pinpoint Oxford #1976/5980; Microfiber Pant #2534/8532; Jersey Knit Cardigan #4350
- Sustainable Shirt #1996/5296; Microfiber Pant #2534/8532; Synergy Dress Pant #2535/8535

Car Service Staff

- Mini-Pique Polo #1507/5507/5570/1527; Blended Chino Cargo Pant #2575/8573
- Ultimate Polo #1512/5512; Flex Chino Pant #2583/8583
- Navigator Shirt #1212/5212; Rugged Comfort Pant #2551/8551; Coach's Jacket #3430
- Essential Broadcloth #1314/5356; Performance Stretch Pant #2558/8558
- Lightweight Poplin #1295/5295; Utility Chino Pant #2537/8537; Performance Pullover #3442
- Stretch Broadcloth #1033/5033; Performance Stretch Pant #2558/8558; 3-Season Jacket #3410





SECURITY

Security Officer, Screener, Security Specialist

GOOD

BETTER

BEST

Security Officer

- Mini-Pique Polo #1527; Utility Chino Cargo Pant #2538/8538
- Hi-Performance Polo #1576/5576; Flex Chino Pant #2583/8583
- Tactical Snag-Proof Polo #1517; Microfiber Pant #2534/8532; Coach's Jacket #3430
- Tactical Snag-Proof Polo #1567; Security Pant #2595/8591
- Security Shirt #1225; Police Bomber Jacket #3464; Security EZ Fit Pant #2596/8596
- Security Shirt #1275; Security Bomber Jacket #3462; Security EZ Fit Pant #2596/8596

Screener

- Essential Broadcloth #1354/5354; Utility Chino Pant #2537/8537; Essential Acrylic Sweaters 4065/4067
- Tactical Polo #1517/1567; Flex Chino Pant #2583/8583
- Navigator Shirt #1212/5212; Microfiber Pant #2534/8532;
- Navigator Shirt #1262/5262; Security Pant #2595/8591; 3-Season Jacket #3410
- Security Shirt #1225; Police Bomber Jacket #3464; Security EZ Fit Pant #2596/8596
- Security Shirt #1275; Security EZ Fit Pant #2596/8596

Security Specialist

- Tactical Polo #1517/1567; Security Pant #2595/8591
- Ultimate Polo #1512/5512; 3-Season Jacket #3410; Flex Chino Pant #2583/8583
- Navigator Shirt #1262/5262; Microfiber Pant #2534/8532
- Stretch Broadcloth #1033/5033; Performance Stretch Pant #2558/8558
- Executive Pinpoint Oxford #1976/5980; Russel Dress Pant #2530/8530; Tri-Blend ¼-Zip #4072
- Sustainable Shirt #1996/5296; Signature Suit Coat #3633/6633; Signature EZ Fit Dress Pant #2531/8531



TRANSIT

Bus Driver/Public Transport, Route Supervisor,
Transportation Director

GOOD

BETTER

BEST

Bus Driver/Public Transport

- Mini-Pique Polo #1507/5507/5570; Utility Chino Short #2437/8435
- Tactical Polo #1517/1567; Utility Chino Pant #2537/8537; Jersey Knit Vest #4561
- Pinpoint Oxford #1925/1975/5975; Flex Chino Pant #2583/8583; Ponte Knit Pant #8571
- Easy Care Poplin #1230/5230; Essential Pant #2793/8793; Tri-blend ¼-Zip #4072
- Navigator Shirt #1212/5212; Performance Stretch Pant #2558/8558
- Navigator Shirt #1262/5262; Microfiber Pant #2534/8532; Coach's Jacket #3430

Route Supervisor

- Ultimate Lightweight Polo #1522/5522/5524; Flex Chino Short #2483/8483
- Bengal Camp Shirt #1038; Rugged Comfort Pant #2551/8551
- Pinpoint Oxford #1975/5975; Utility Chino Pant #2537/8537; Performance Pullover #3442
- Optical Heather Polo #1590/5590; Flex Chino Pant #2583/8583; Ponte Knit Pant #8571
- Lightweight Poplin #1295/5040; Soft Shell Blouse #5426; Performance Stretch Pant #2558/8558
- Executive Pinpoint Oxford #1976/5980; Microfiber Pant #2534/8532; Lightweight Soft-Shell Jacket #3428/6428

Transportation Director

- Essential Broadcloth #1354/5355; Utility Chino Pant #2537/8537
- Optical Heather Polo #1590/5590; Flex Chino Pant #2583/8583
- Lightweight Poplin #1295/5040; Performance Stretch Pant #2558/8558; Cotton Blend ¼-Zip #712
- Easy Care Oxford #1077/5077; Microfiber Pant #2534/8532; Contemporary Blazer #3505/6505
- Comfort Stretch Poplin #1231/5231; Soft Shell Blouse #5426; Russel Dress Pant #2530/8530
- Executive Pinpoint Oxford #1976/5980; Synergy Dress Pant #2535/8535





AIRPORT/AIRLINES

Flight Attendant, Pilot, Security

GOOD

BETTER

BEST

Flight Attendant

- Ultimate Polo #1512/5512/5524; Performance Stretch Pant #2558/8558
- Essential Broadcloth Shirt #1354/5355; Essential Vest #4490/7490; Polyester Pant & Skirt #2290/9799
- Lightweight Poplin #1295/5295/5040; Ottoman Trim Vest #4398/7398; Essential Pant #2793/8793; Ponte Sheath Dress #9935;
- Batiste Shirt #1292/5292; Dress Lapel Vest #4496/7496; Microfiber Pant & Skirt #2534/9732
- Soft Blouses #5426/5428/5097; V-Neck Blouse #5274; Synergy Skirt #9725; Synergy Dress #9925; Ponte Pant 8571
- Sustainable Dress Shirt #1996/5296; Synergy Vest #4525/7526; Synergy Dress Pant & Skirt #2535/9725

Pilot

- Navigator Shirt #1212/5212; Microfiber Pant #2534/8532
- Navigator Shirt #1262; Microfiber Pant #2534/8532; Solid Tie #SD00
- Stretch Broadcloth #1033/5033; Russel Pant #2530/8530
- Sustainable Shirt #1996/5296; Signature Suit Coat #3650/6633; Signature Dress Pant #2733/8733
- Executive Pinpoint Oxford #1978/5980; Synergy Suit Coat #3525/6575; Synergy Dress Pant #2535/8535
- Point Grey Shirt #1972/5272; Point Grey Blazer #3572/6572; Point Grey Pant #2572/8577

Security

- Mini-Pique Polo #1527; Security Pant #2595/8591
- Tactical Polo #1517/1567; Microfiber Pant #2534/8532
- Easy Care Poplin #1280/5280; Signature Suit Coat #3633/6633; Signature Dress Pant #2733/8733; Tri-Blend ¼-Zip #4072
- Navigator Shirt #1212/5212; Signature EZ Fit Dress Pant #2531/8531
- Security Shirt #1225; Police Bomber Jacket #3464; Security EZ Fit Pant #2596/8596
- Security Shirt #1275; Security Bomber Jacket #3462; Security EZ Fit Pant #2596/8596



AIRPORT/AIRLINES

Grounds Crew, Air Traffic Control, Customer Service Agent

GOOD

BETTER

BEST

Grounds Crew

- Tactical Polo #1517/1567; Utility Chino Cargo Short #2438/8438
- Melange Camp Shirt #1039/5041; Flex Chino Pant #2583/8583
- Easy Care Poplin #1230/5230; Utility Chino Cargo Pant #2538/8538; Tri-Blend ¼-Zip #4072
- Essential Broadcloth #1314/5356; Rain Jacket #3435; Utility Chino Pant #2537/8537
- Bengal Camp Shirt #1038; Coach's Jacket #3430; Performance Stretch Pant #2558/8558
- Navigator Shirt #1212/5212/1262/5262; Performance Stretch Pant #2558/8558

Air Traffic Control

- Essential Broadcloth #1314/5356; Utility Chino Cargo Short #2438/8438
- Ultimate Polo #1512/5212/5524; Essential Pant #2793/8793
- Easy Care Poplin #1230/5230; Performance Stretch Pant #2558/8558; Herringbone Jacket #3465/6465
- Lightweight Poplin #1295/5295/5040/1245/5245; Performance Stretch Pant #2558/8558
- Pinpoint Oxford #1975/5975; Microfiber Pant & Shorts #2534/8532/2432/8432; Acrylic Full-Zip Sweater #4066
- Stretch Broadcloth #1033/5033; Flex Chino Pants & Shorts #2583/8583/2483/8483

Customer Service Agent

- Hospitality Broadcloth #1290/5290; Essential Pant #2793/8793
- Ultimate Polo #1512/5212/5524; Performance Stretch Pant #2558/8558
- Comfort Stretch Poplin #1246/5246; Microfiber Pant & Skirt #2534/8532/9732; Contemporary Blazer #3505/6505
- Batiste Shirt #1292/5292; Essential Pant #2793/8793; Ottoman Trim Vest #4398/7398
- Stretch Broadcloth #1033/5033; Signature Dress Pant #2733/8733; Signature Blazer #3633/6633
- Pinpoint Oxford #1975/5975; Soft Wrap Blouse #5428; Synergy Dress Pant & Skirt #2525/8525/9725





GROCERY STORES

Cashier/Bagger, Stocker, Management

GOOD

BETTER

BEST

Cashier/Bagger

- Mini-Pique Polo #1507/5507/5570; Utility Chino Short #2437/8435
- Hi Performance Mesh Polo #1576/5576; Utility Chino Pant #2537/8537; Microfleece Jacket #3450/6450
- Essential Broadcloth #1354/5355; Rugged Comfort Pant #2551/8551
- Lightweight Poplin #1295/5295/5040; Essential Pant #2793/8793; Performance Pullover #3442
- Melange Camp Shirt #1039/5041; Flex Chino Pant #2583/8583
- Easy Care Poplin #1280/5280; Performance Stretch Pant #2558/8558; Tri-blend ¼-Zip #4072

Stocker

- Mini-Pique Polo #1507/5507/5570; Utility Chino Short #2437/8435
- Food Service Polo #1586; Rugged Comfort Pant #2551/8551; Cobbler Apron #9006
- Essential Broadcloth #1314/5356; Utility Chino Pant #2537/8537; Twill Bib Apron #9043
- Easy Care Poplin #1230/5230; Utility Chino Cargo Pant #2538/8538
- Bengal Camp Shirt #1038; Flex Chino Pant #2583/8583
- Stretch Broadcloth #1033/5033; Performance Stretch Pant #2558/8558; Denim Bib/ Waist Apron #9097/9098

Management

- Optical Heather Polo #1590/5590; Flex Chino Pant #2583/8583
- Lightweight Poplin #1295/5295/5040; Microfiber Pant #2534/8532; Essential Sweater & Vest #4067/4065
- Stretch Broadcloth #1033/5034; Microfiber Pant #2534/8532; Herringbone Jacket #3465/6465
- Easy Care Oxford #1027/5027; Dolman Blouse #5229; Performance Stretch Pant #2558/8558
- Executive Pinpoint Oxford #1976/5980; V-Neck Blouse #5275; Russel Dress Pant & Skirt #2530/8530/9730
- Sustainable Shirt #1996/5296; Soft Wrap Blouse #5428; Synergy Dress Pant #2535/8535



GOLF COURSE

Pro-Shop Associate, Course Maintenance,
Club Manager

GOOD

BETTER

BEST

Pro-Shop Associate

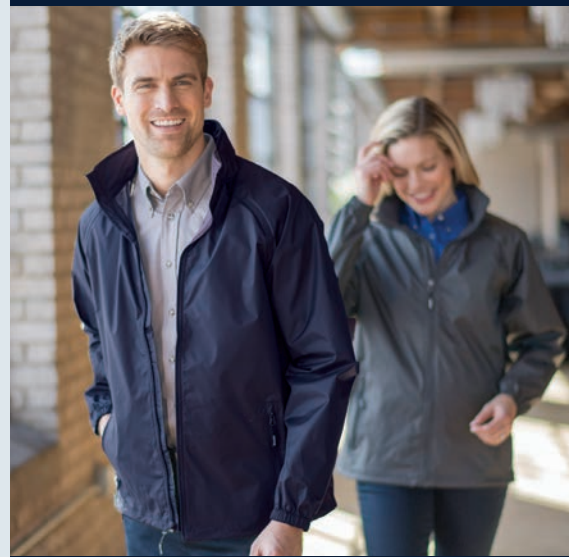
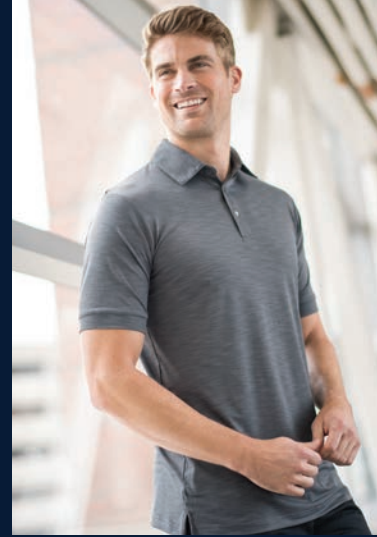
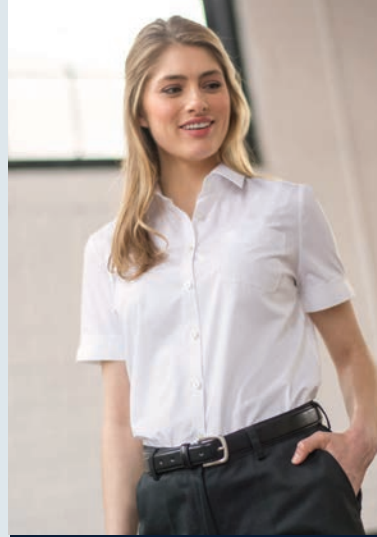
- Mini-Pique Polo #1507/5507/5570; Utility Chino Short #2437/8435
- Mini-Pique Snag-Proof Polo #1527; Microfiber Pant #2534/8532
- Ultimate Lightweight Polo #1522/5522; Microfiber Short #2432/8432
- Melange Camp Shirt #1039/5041; Performance Stretch Pant #2558/8558; Performance Pullover #3442
- Optical Heather Polo #1590/5590; Flex Chino Short #2483/8483
- Bengal Camp Shirt #1038; Flex Chino Pant #2583/8583; Her-ringbone Jacket #3465/6465

Course Maintenance

- Mini-Pique Polo #1507/5507/1527/5570; Utility Chino Pant #2537/8537
- Essential Broadcloth 1314/5356; Flex Chino Pant #2583/8583
- Easy Care Poplin #1230/5230; Utility Chino Cargo Short #2438/8438
- Hi-Performance Polo #1576/5576/1578; Utility Chino Cargo Pant #2538/8538
- Bengal Camp Shirt #1038; Rain Jacket #3435; Utility Chino Short #2437/8435
- Optical Heather Polo #1590/5590; Flex Chino Short #2483/8483; Lightweight Soft-Shell Jacket #3428/6428

Club Manager

- Essential Broadcloth #1314/5356; Essential Pant #2793/8793
- Lightweight Poplin #1295/5040; Microfiber Short #2432/8432
- Optical Heather Polo #1590/5590; Performance Stretch Pant #2558/8558
- Easy Care Oxford #1077/5077; Flex Chino Pant #2583/8583; Acrylic Full-Zip Sweater #4066
- Sustainable Shirt #1996/5296; Soft Wrap Blouse #5428; Microfiber Pant #2534/8532
- Executive Pinpoint Oxford #1976/5980; Synergy Dress Pant #2535/8535





FINANCIAL

Accountant, Bank Teller, Analyst

GOOD BETTER BEST

Accountant

- Lightweight Poplins #1295/5295/5040; Performance Stretch Pant #2558/8558, Performance Pullover #3442
- Easy Care Poplin #1230/5230; Flex Chino Pant #2583/8583
- Stretch Broadcloth #1033/5034; Russel Dress Pant & Skirt #2530/8530/9730; Herringbone Jacket #3465/6465
- Batiste Shirt #1292/5293; Dolman Blouse #5229; Microfiber Pant #2534/8532; Ponte Knit Pant #8571
- Executive Pinpoint Oxford #1976/5980; Soft Wrap Blouse #5428; Synergy Suit Coat #3525/6525; Synergy Dress Pant & Skirt #2535/8535/9725
- Point Grey Shirt #1972/5272; Point Grey Blazer #3572/6572; Point Grey Pant #2572/8577

Bank Teller

- Essential Broadcloth #1354/5355; Polyester Pant #2290/8550
- Ultimate Polo #1512/5512/5524; Essential Pant #2793/8793; Performance Tek Jacket #3440/6440
- Lightweight Poplin #1295/5040; Performance Stretch Pant #2558/8558; Performance Pullover #3442
- Optical Heather Polo #1590/5590; Soft Pleated Blouse #5097; Flex Chino Pant #2583/8583
- Executive Pinpoint Oxford #1976/5980; Russel Dress Pant #2530/8530; Herringbone Jacket #3465/6465
- Sustainable Shirt #1996/5296; Microfiber Pant #2534/8532

Analyst

- Easy Care Poplin #1280/5280; Microfiber Pant #2534/8532
- Ultimate Polo #1512/5512/5524; Flex Chino Pant #2583/8583; Performance Tek Jacket #3440/6440
- Optical Heather Polo #1590/5590; Performance Stretch Pant #2558/8558
- Easy Care Oxford #1077/5077; Microfiber Pant #2534/8532; Acrylic Open Cardigan #7053
- Executive Pinpoint Oxford #1976/5980; Russel Dress Pant #2530/8530; Lightweight Soft-Shell Jacket #3428/6428
- Sustainable Shirt #1996/5296; Soft Shell Blouse #5426; Synergy Dress Pant #2525/8526

AMUSEMENT PARK

Game/Ride Attendant, Admissions/Park Supervisor,
Ride Tech

GOOD

BETTER

BEST

Game/Ride Attendant

- Mini-Pique Polos #1507/5507/5570; Utility Chino Pant #2537/8537
- Hibiscus Camp Shirt #1036; Utility Chino Short #2437/8435
- Hi-Performance Polo #1576/5576/1578; Flex Chino Short #2483/8583; Twill Waist Apron #9041
- Sorrento Tech Shirt #4283; Flex Chino Pant #2583/8583; Rain Jacket #3435
- Bengal Camp Shirt #1038; Performance Stretch Pant #2558/8558
- Melange Chambray Shirt #1039/5041; Performance Stretch Pant #2558/8558; Lightweight Soft-Shell Jacket #3428/6428

Admissions/Park Supervisor

- Ultimate Lightweight Polos #1522/5522/5524; Flex Chino Pant & Short #2583/8583/2483/8483
- Easy Care Oxford #1077/5077; Essential Pant #2793/8793
- Easy Care Poplin #1230/5230; Performance Stretch Pant #2558/8558
- Hi-Performance Polo #1576/5576/1578; Microfiber Pant #2534/8532
- Lightweight Poplin #1245/5245; Microfiber Short #2432/8432; Herringbone Jacket #3465/6465
- Optical Heather Polo #1590/5590; Soft Shell Bouse #5426; Performance Stretch Pant #2558/8558

Ride Tech

- Tactical Polo #1517/1567; Utility Chino Cargo Pant #2538/8538; Coach's Jacket #3430
- Mini-Pique Polos #1507/5507/1527/5570; Rugged Comfort Pant #2551/8551
- Essential Broadcloth #1314/5356; EZ Fit Utility Chino Pant #2540/8540
- Ultimate Lightweight Polos #1522/5522/5524; Utility Chino Cargo Short #2438/8438
- Easy Care Poplin #1230/5230; Utility Chino Short #2437/8435
- Stretch Broadcloth #1033/5033; Utility Chino Pant #2537/8537; 3-Season Jacket #3410





SERVICE CREW

HVAC, Landscaping, Construction

GOOD

BETTER

BEST

HVAC

- Mini-Pique Polo #1507/5507; Flex Chino Pant #2583/8583
- Navigator Shirt #1262/5262; Rugged Comfort Pant #2551/8551
- Melange Camp Shirt #1039/5041; Utility Chino Pant #2537/8537; 3-Season Jacket #3410
- Ultimate Lightweight Polo #1522/5522; Utility Chino Short #8435/2437; Performance Pullover #3442
- Essential Broadcloth #1354/5354; Utility Chino Cargo Short #2438/8438
- Bengal Camp Shirt #1038; Performance Stretch Pant #2558/8558

Landscaping

- Ultimate Polo #1512/5512; Utility Chino Cargo Short #2438/8438
- Mini-Pique Polo #1527; Rugged Comfort Pant #2551/8551
- Lightweight Poplin #1245/5246; EZ Fit Utility Chino Pant #2540/8540; Puffer Jacket #3453
- Hi-Performance Polos #1576/5576/1578; Utility Chino Short #2437/8435
- Melange Camp Shirt #1039/5041; Flex Chino Pant & Short #2583/8583/2483/8483; Rain Jacket #3435
- Essential Broadcloth #1314/5356; Utility Chino Pant #2537/8537

Construction

- Tactical Polo #1517/1567; Blended Chino Cargo Pant #2575/8573
- Hi-Performance Polos #1576/1578/5576; Rugged Comfort Pant #2551/8551
- Essential Broadcloth #1354/5354; Utility Chino Cargo Short #2438/8438
- Denim Shirt #1013/1093; EZ Fit Utility Chino Pant #2540/8540
- Navigator Shirt #1262/5262; Utility Chino Cargo Short #2438/8438
- Stretch Broadcloth #1033/5033; Utility Chino Cargo Pant #2538/8538; 3-Season Jacket #3410



SERVICE CREW

Pest Control, Maintenance, Residential/Commercial Cleaner

GOOD

BETTER

BEST

Pest Control

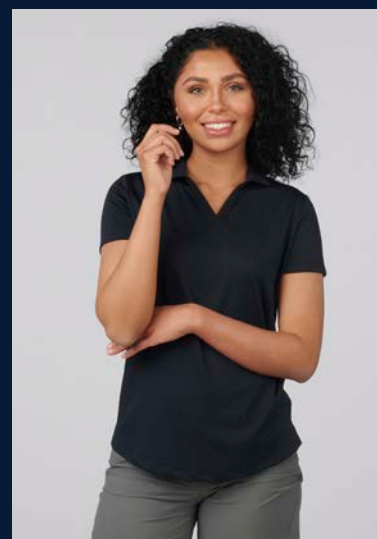
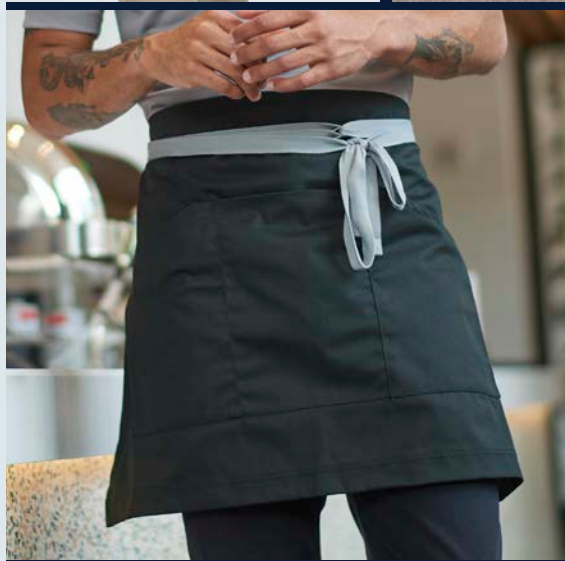
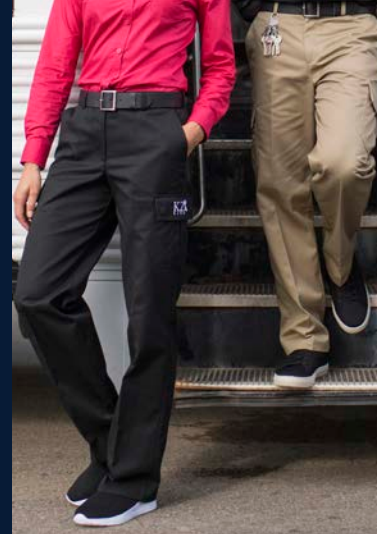
- Tactical Polo #1517/1567; Rugged Comfort Pant #2551/8551
- Hi-Performance Polos #1576/5576/1578; Flex Chino Pant #2583/8583
- Hi-Performance Polos #1576/1578/5576; Performance Stretch Pant #2551/8551; Lightweight Soft-Shell Jacket #3428/6428
- Essential Broadcloth #1354/5354; EZ Fit Utility Chino Pant #2540/8540
- Easy Care Poplin #1280/5280; Utility Chino Pant #2537/8537; Performance Pullover #3442
- Melange Camp Shirt #1039/5041; Utility Chino Cargo Pant #2538/8538

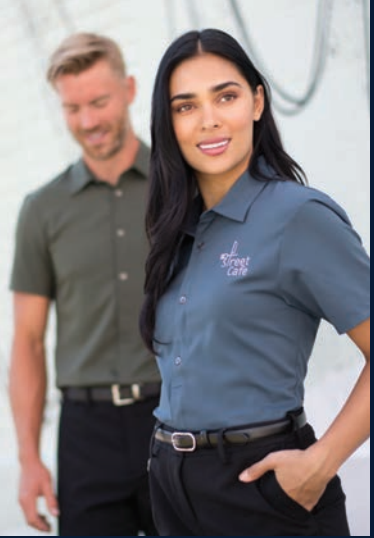
Maintenance

- Mini-Pique Polo #1507/5507; Utility Chino Cargo Pant #2538/8538; Coach's Jacket #3430
- Essential Service Shirt & Smock #4891/7887/7889; Rugged Comfort Pant #2551/8551
- Essential Broadcloth #1314/5356; Utility Chino Pant #2537/8537
- Essential Service Shirt & Scoop Neck Tunic #4284/7284; Flex Chino Pant #2583; Pull-on Pant #8898
- Denim Shirt #1013/1093; Utility Chino Cargo Pant #2538/8538
- Melange Camp Shirt #1039/5041; Essential Pant #2793/8793; Acrylic Full-Zip Jacket #4066

Residential/Commercial Cleaner

- Ultimate Lightweight Polos #1522/5522/1562/5524; Performance Stretch Pant #2558/8558; Twill Apron #9003
- Mini-Pique Polos #1507/5507/1527; EZ Fit Utility Chino Pant #2540/8540
- Hi-Performance Polos #1576/5576/1578; Rugged Comfort Pant #2551/8551
- Essential Broadcloth #1354/5354; Utility Chino Pant #2537/8537; Twill Bib & Waist Apron #9041/9043
- Melange Chambray Shirt #1039/5041; Flex Chino Pant #2583/8583; Lightweight Soft-Shell Jacket #3428/6428
- Melange Service Shirt & Tunic #4281/7279; Sorrento Pull-on Pant #8861; Essential Pant #2793





WAREHOUSE/DELIVERY

Delivery Driver, Floor Worker, Distribution Manager

GOOD

BETTER

BEST

Delivery Driver

- Mini-Pique Polo #1507/5507; Flex Chino Short #2483/8483
- Melange Chambray Shirt #1039/5041; Flex Chino Pant #2583/8583
- Hi-Performance Polo #1576/5576; Utility Chino Short #2437/8435; 3-Season Jacket #3410
- Navigator Shirt #1212/5212; Rugged Comfort Pant #2551/8551
- Essential Broadcloth #1314/5356; Utility Chino Pant #2537/8537
- Easy Care Poplin #1280/5280; Performance Stretch Pant #2558/8558; Lightweight Soft-Shell Jacket #3428/6428

Floor Worker

- Mini-Pique Polo #1507/5507; Rugged Comfort Pant #2551/8551
- Ultimate Polo #1512/5512; Flex Chino Pant #2583/8583
- Hi-Performance Polos #1576/5576/1578; Utility Chino Short #2437/8435
- Tactical Polo #1517/1567; EZ Fit Utility Chino Pant #2540/8540
- Essential Broadcloth #1314/5356; Utility Chino Pant #2537/8537
- Bengal Camp Shirt #1038; Performance Stretch Pant #2558/8558

Distribution Manager

- Mini-Pique Polos #1507/5507/1527; Rugged Comfort Pant #2551/8551
- Ultimate Lightweight Polos #1522/5522/5524; Utility Chino Pant #2537/8537
- Easy Care Poplin #1230/5230; Flex Chino Pant #2583/8583; Acrylic Full-Zip Sweater #4066; Tri-Blend Full-Zip Cardigan #7064
- Stretch Broadcloth #1033/5033; Performance Stretch Pant #2558/8558
- Pinpoint Oxfords #1925/1975/5975; Microfiber Pant #2534/8532
- Executive Pinpoint Oxford #1976/5980; Russel Pant #2530/8530; Lightweight Soft-Shell Jacket #3428/6428



STADIUM/ARENA

Stadium Staff, Concession, Janitor/Cleaning Crew

GOOD

BETTER

BEST

Stadium Staff

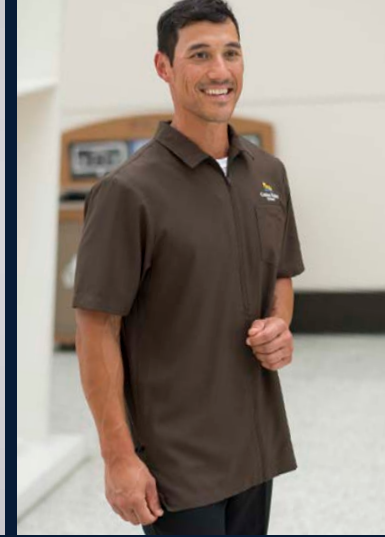
- Essential Broadcloth #1354/5354/5355; Rugged Comfort Pant #2551/8551; Coach's Jacket #3430
- Mini-Pique Polos #1507/5507/5570; Utility Chino Short #2437/8435
- Hi-Performance Polo #1576/5576; 8551; Flex Chino Shorts #2483/8483; Performance Pullover #3442
- Lightweight Poplin #1295/5040; Flex Chino Pant #2583/8583; Ponte Knit Pant #8571
- Stretch Broadcloth #1033/5033; Performance Stretch Pant #2558/8558
- Batiste Shirt #1292/5293; Microfiber Pant #2534/8532; Lightweight Soft-Shell Jacket #3428/6428

Concession

- Food Service Polo #1586; Traditional Chef Pant #2001
- Mini-Pique Polos #1507/5507/5570; Rugged Comfort Pant #2551/8551
- Essential Broadcloth #1314/5356; Essential Pant #2793/8793; Microfiber Jacket #3450/6450
- Ultimate Lightweight Polos #1522/5522/5524; Flex Chino Pant #2583/8583; Ponte Knit Pant #8571
- Batiste Café Shirts #1291/5291/1031; Performance Stretch Pant #2558/8558
- Melange Chambray Shirt #1039/5041; Soft Shell Blouse #5426; Performance Stretch Pant #2558/8558

Janitor/Cleaning Crew

- Pinnacle Service Shirt & Tunic #4280/7280; Essential Pant #2793/8793
- Mini-Pique Polo #1527; EZ Fit Utility Chino Pant #2540/8540; Coach's Jacket #3430
- Hi-Performance Polos #1576/5576/1578; Performance Stretch Pant #2558/8558; Performance Tek Jacket #3440/6440
- Essential Service Shirt & Tunic #4284/7292; Flex Chino Pant #2583/8583
- Essential Broadcloth #1314/5356; Utility Chino Pant #2537/8537
- Melange Camp Shirt #1039/5041; Essential Pant #2793/8793; Acrylic Full-Zip Jacket #4066



STOP RUNNING

You've found your perfect supplier partner for outfitting industry programs. Our in-stock ready-to-ship styles check all the boxes.

- ✓ Deep on-hand inventory
- ✓ No risk decoration
- ✓ Consistent sizing
- ✓ Styles with longevity
- ✓ Remarkable merchandising
- ✓ Easy order logistics

COMMITTED TO SUSTAINABILITY



Sustainable
Apparel Coalition





**EXCLUSIVE
CUSTOM DESIGN**

EXCLUSIVE CUSTOM DESIGN

Make your uniform exceptional with every garment made-to-order. Custom fabrics. Custom colors. Custom decorations. Complete control over the entire process, start to finish.

SUSTAINABILITY

Every project is filtered through the latest innovations in sustainability and our entire effort is anchored in a bedrock of social responsibility. We strive to gain partnerships, certifications, and new ways to create a little to no environmental footprint.

GET INSPIRED!

Allow us to create a fully custom deck for you and your clients at no charge. We believe our photo-real mock-ups will knock your socks off. You tell us the idea, we'll create a story.

